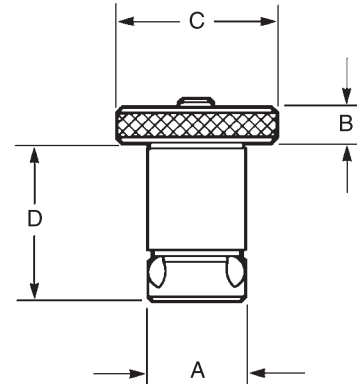


Locating and Clamping Shanks



- Material: Shank/Bushing, 4340 Liner, 52100
- Finish: Black Oxide
- Heat Treat: Shanks, RC 40-45 Bushings, RC 50-54 Liners, RC 62-64
- Operating Temperature Range -20° to 400°F, -30° to 200°C

Stainless Steel available.
See Page 20-21



Ball Lock® Repair Kits



- Each Kit Includes:
- Replacement Screw
 - Locking Balls
 - Drive Ball
 - O-Ring

Any Ball Lock® application requires at least two sets of shanks, receiver bushings and liners. The liners are placed into the fixture plate to insure extremely accurate positioning. If more than two shanks are required (to provide additional hold down force), omit the liner bushing so that these additional holes will not interfere with your primary locating holes.

See page 23 for Fast Acting Shanks.

Locating and Clamping Shank Dimensions

| Shank Diameter (mm) A | Fixture Plate Thickness ±0.005 | Shank Part Number | Head of Shank | | Length Under Head D | Hex Wrench Size for Set Screw | Maximum | | Recommended | | Shank Repair Kit Part Number |
|--------------------------|-----------------------------------|-------------------|---------------|---------------|------------------------|-------------------------------|----------------------|-----------------------|----------------------|-----------------------|------------------------------|
| | | | Height B | Diameter C | | | Screw Torque (Ft/lb) | Hold-Down Force (lbs) | Screw Torque (Ft/lb) | Hold-Down Force (lbs) | |
| 13 | 0.50 | 49605 | 0.25 | 0.87 | 1.08 | 3/32 | 1.2 | 750 | 1 | 625 | 49905 |
| — | 0.75 | 49606 | — | — | 1.33 | — | — | — | — | — | 49906 |
| — | 1.25 | 49604 | — | — | 1.83 | — | — | — | — | — | 49904 |
| 16 | 0.50 | 49607 | 0.32 | 1.50 | 1.15 | 1/8 | 3 | 1200 | 2 | 800 | 49907 |
| — | 0.75 | 49608 | — | — | 1.4 | — | — | — | — | — | 49908 |
| — | 1.25 | 49609 | — | — | 1.90 | — | — | — | — | — | 49909 |
| 20 | 0.75 | 49601 | 0.38 | 1.75 | 1.53 | 1/8 | 4 | 3000 | 3 | 2250 | 49901 |
| — | 1.00 | 49602 | — | — | 1.78 | — | — | — | — | — | 49902 |
| — | 1.50 | 49603 | — | — | 2.28 | — | — | — | — | — | 49903 |
| 25 | 0.75 | 49611 | 0.38 | 2.00 | 1.70 | 5/32 | 9 | 7000 | 7 | 5444 | 49911 |
| — | 1.00 | 49612 | — | — | 1.95 | — | — | — | — | — | 49912 |
| — | 1.50 | 49613 | — | — | 2.45 | — | — | — | — | — | 49913 |
| 30 | 0.75 | 49621 | 0.50 | 2.25 | 1.88 | 3/16 | 15 | 10000 | 12 | 8000 | 49921 |
| — | 1.00 | 49622 | — | — | 2.13 | — | — | — | — | — | 49922 |
| 35 | 0.75 | 49631 | 0.50 | 2.25 | 1.97 | 1/4 | 25 | 15500 | 19 | 11780 | 49931 |
| — | 1.00 | 49632 | — | — | 2.22 | — | — | — | — | — | 49932 |
| — | 1.50 | 49633 | — | — | 2.72 | — | — | — | — | — | 49933 |
| — | 2.00 | 49634 | — | — | 3.22 | — | — | — | — | — | 49934 |
| 50 | 0.75 | 49641 | 0.75 | 3.00 | 2.45 | 3/8 | 50 | 20000 | 38 | 15200 | 49941 |
| — | 1.00 | 49642 | — | — | 2.70 | — | — | — | — | — | 49942 |
| — | 1.50 | 49643 | — | — | 3.20 | — | — | — | — | — | 49943 |
| — | 2.00 | 49644 | — | — | 3.70 | — | — | — | — | — | 49944 |

QUICK CHANGE FIXTURING » BALL LOCK® MOUNTING SYSTEM